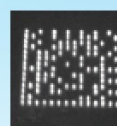


Mobile Image Scanner

MS3590



- A lightweight programmable data terminal
- A SDK based on C is provided including user-friendly IDE & fully functional APIs
- Compact size and portable design contributes to excellent mobility
- Bluetooth protocol supports both HID and SPP, and is compatible with iOS, Android and Windows OS
- Support database importing and querying
- Multi-line screen (128 x 64) with backlight
- High capacity storage: 16MB in Batch mode, 96MB in U-Disk mode
- Battery (1900mAH) life for 5+ hours of continuous use/ 7+ days standby
- Read all major 1D and 2D symbols
- Read symbols from mobile phones/ inverse symbol/ DPM symbol



DPM symbol

MS3590 Specifications

Data storage	16 MB for out of range batch/data batch mode: 1,118,480 barcodes (each barcode is of 15 bytes); 96 MB for U Disk mode: 1,509,949,440 barcodes (each barcode is of 15 bytes).	
Radio link	2.4 ~ 2.5GHz (ISM band), Bluetooth V2.1+EDR, class 2	
Working range	30 meters (line of sight)	
Interface	Bluetooth scanner: HID Keyboard, Serial Port Profile (SPP), operating as either a master or a slave	
	USB wired scanner: USB HID keyboard, USB virtual COM	
	U Disk (with which barcode data is stored in a txt file rather than sent to a host via Bluetooth/USB)	
Keyboard layout	USA, Turkish F/Q, French, Italian, Spanish, Slovak, Denmark, Japanese, German	
Dimensions	L × W × D: 125mm × 46mm × 31mm	
Weight	128g	
Color	White/ Black/ Grey/ Customization	
Battery	1900 mAh Lithium-ion battery	
Charge time	Fully charged (>80%) in 4 hours	
Charge current	500 mA	
Standby time	Over 7 days	
Operating time	5.5 hours	
Case material	ABS	
Image size	838 × 640 pixels	
Scanning angle	±60°, ±40°, 360° (Skew, Pitch, Roll)	
Decode capability	1D: All major 1D symbols including GS1 DataBar	
	2D: PDF417, MicroPDF417, QR Code, DataMatrix, Han Xin Code, Aztec Code	
Indicator	Beeper, LED, Vibrator	
Display	LCD monochrome display (128 × 64) with LED backlight	
Operating mode	Handheld	
Programming method	Manual (reading special barcode); On-Screen (pressing special keys)	
Firmware upgrade	Online via USB interface	
Temperature	-20° to 55°C (-4° to 131°F), Operating; -40° to 70°C (-40° to 158°F), Storage	
Humidity	5% to 95% (non-condensing)	
Input Voltage	4.75V – 5.25V	
Operating current	5mA (sleeping); 350mA (scanning); 360mA (transmitting)	
Decode depth & Max. resolution	3.5mil Code128 (9 chars):	1.5cm – 3.5cm
	5mil Code39 (20 chars):	0.8cm – 5.5cm
	13mil UPC (12 chars):	0.7cm – 16.5cm
	20mil Code39 (5 chars):	3.5cm – 21.0cm
Safety	6.7mil PDF417 (20 chars): 0.0cm – 7.5cm	
	10 mil DM (20 chars): 0.0cm – 11.5cm	
	20 mil QR (20 chars): 0.0cm – 19.5cm	
Safety	Laser safety: EN60825-1, class 1; EMC: EN55022, EN55024; ESD: ±8KV air discharge, ±4KV direct	
	discharge; Protection class: IP64; Environmental: RoHS compliant; Electrical safety: EN60950-1;	
	Drop resistance: Multiple 1.5m (4.9ft) drops to concrete	

